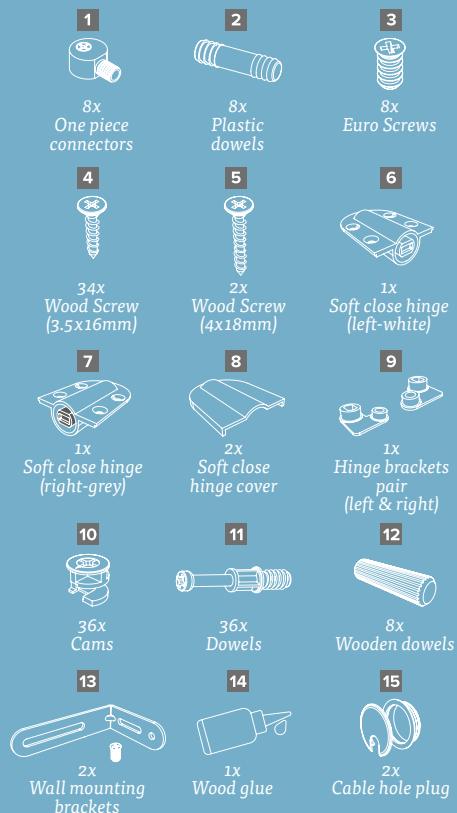


DRESSING TABLE

Assembly Instructions

CONTENTS:

- A** 1x Lid (with mirror)
- B** 1x Lid infill
- C** 1x Top panel (left)
- D** 1x Top panel (right)
- E** 1x Back panel
- F** 1x Inside back panel
- G** 1x Left outer side panel
- H** 1x Left inner side panel
- I** 1x Right inner side panel
- J** 1x Right outer side panel
- K** 4x Soft close drawer runners (2x left, 2x right)
- L** 1x Base
- M** 1x Front panel
- N** 1x Decorative panel
- O** 4x Legs
- P** 2x Drawer backs
- Q** 2x Drawer sides (left)
- R** 2x Drawer sides (right)
- S** 2x Drawer base
- T** 1x Drawer fronts (left)
- U** 1x Drawer fronts (right)
- V** 4x Soft close clips (2x left, 2x right)
- W** 4x Leg mounting plates

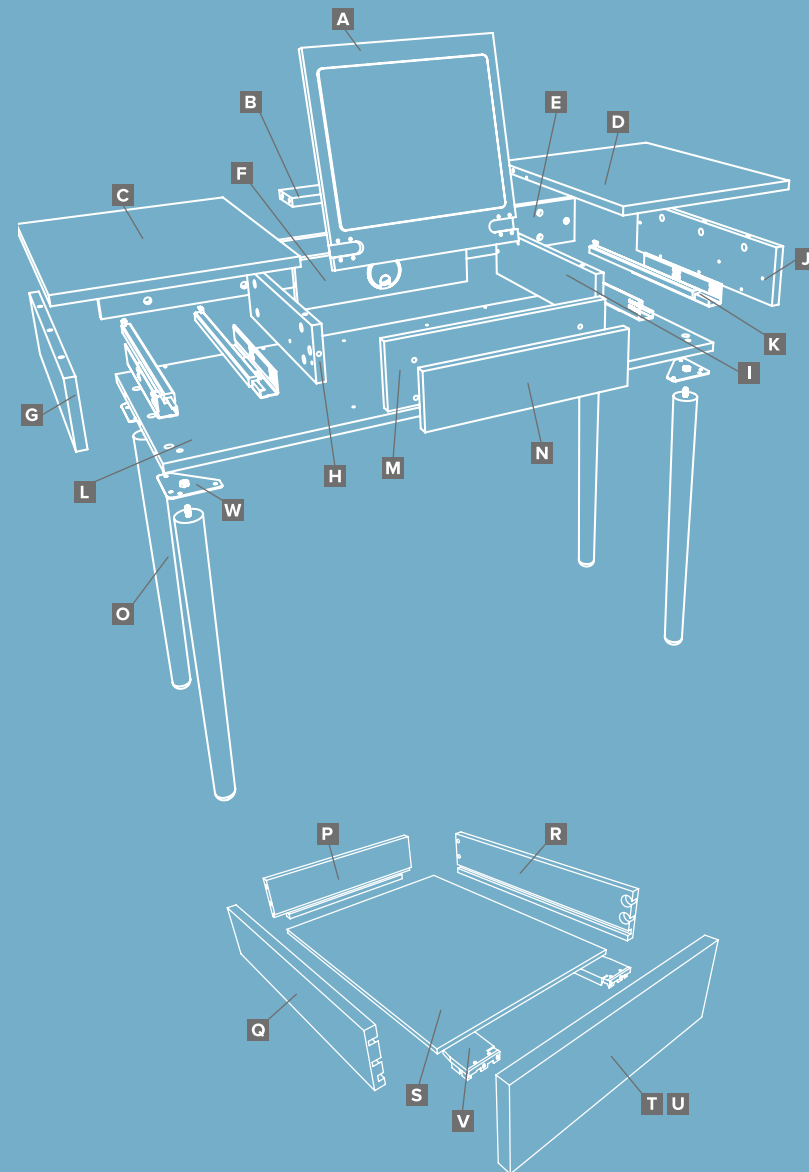


RECOMMENDED:

- TOOLS: Screwdriver & Hammer
- TWO PERSON BUILD

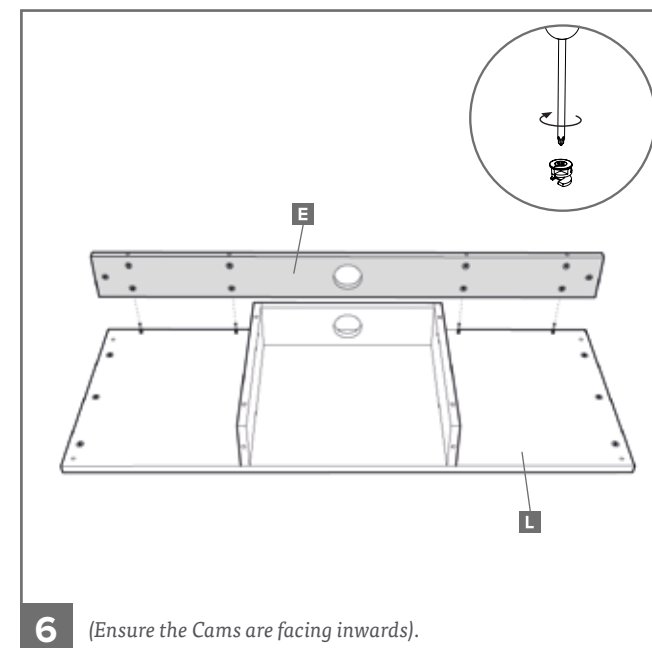
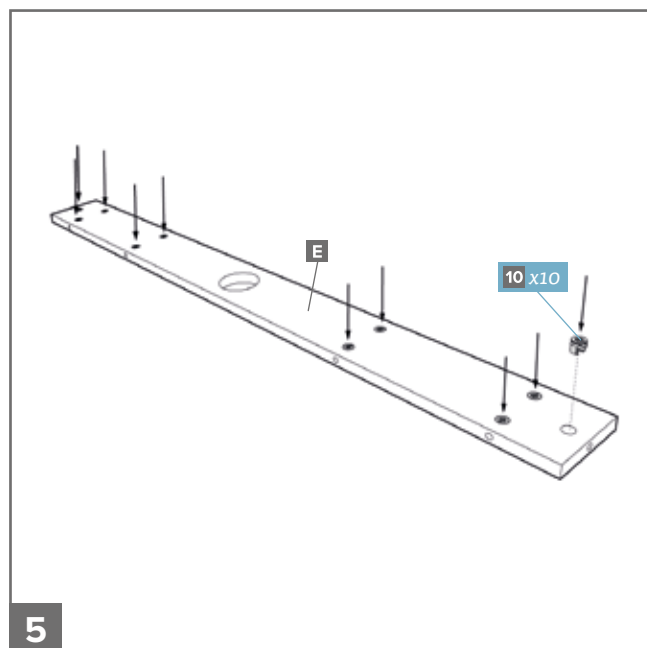
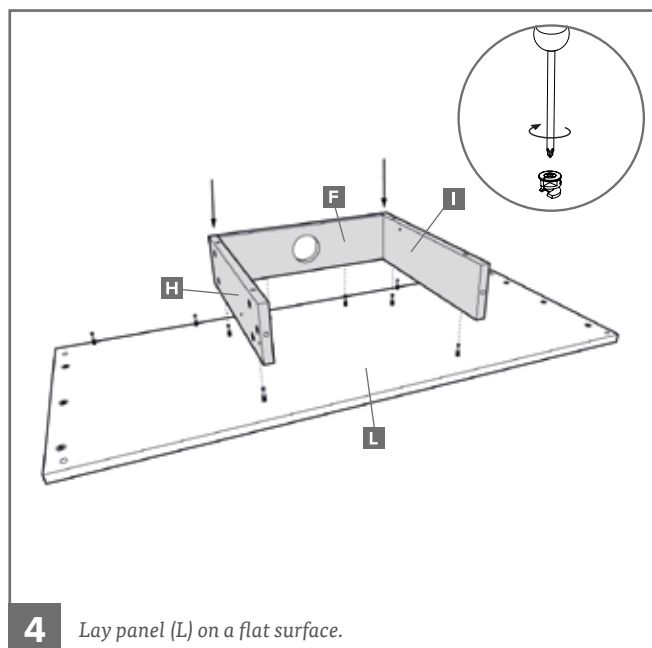
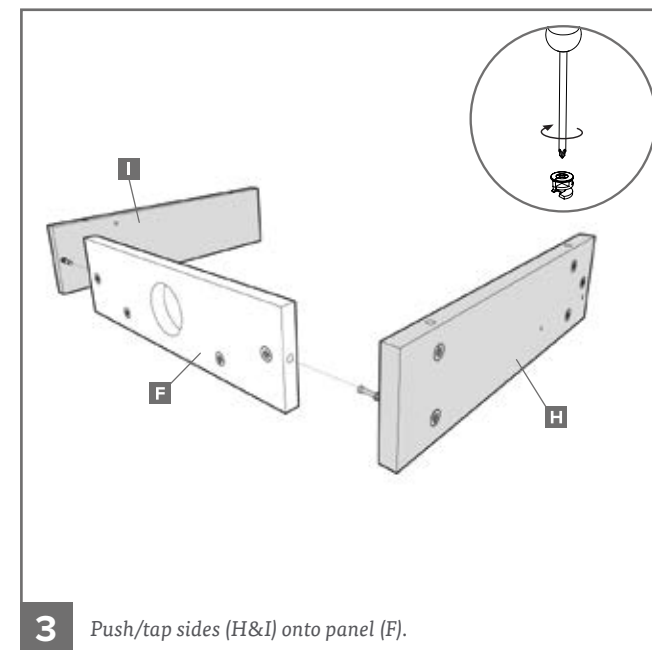
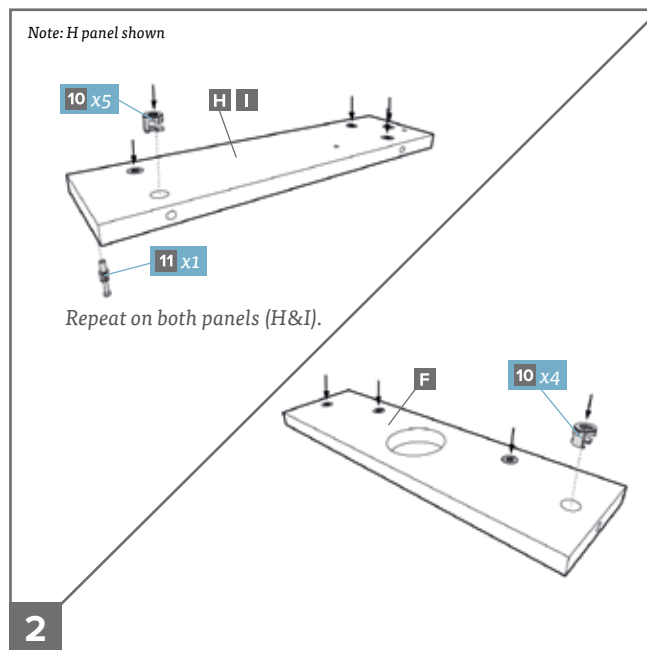
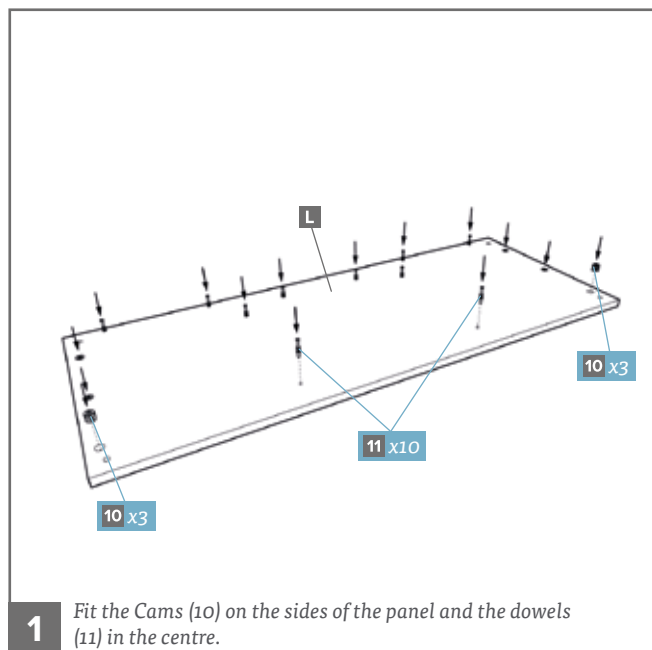


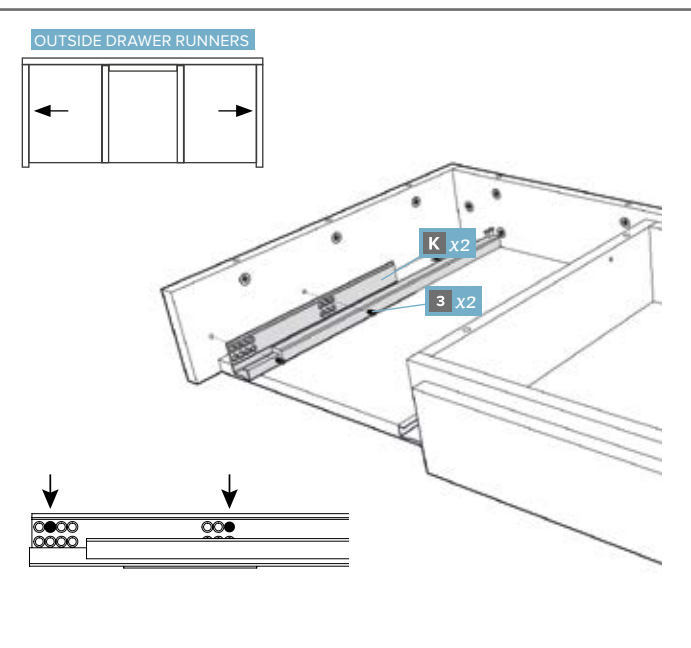
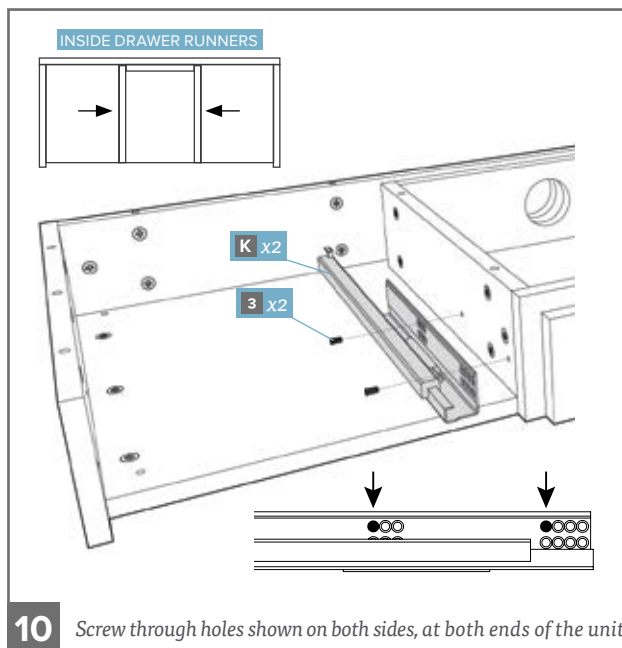
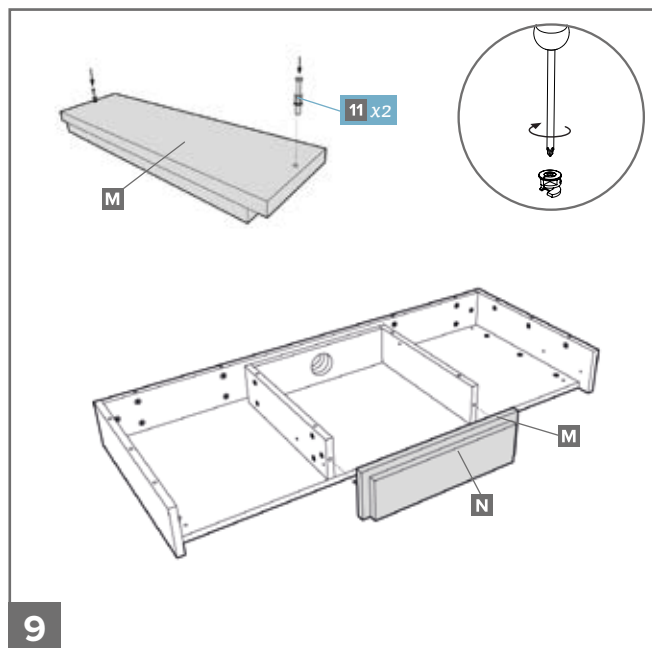
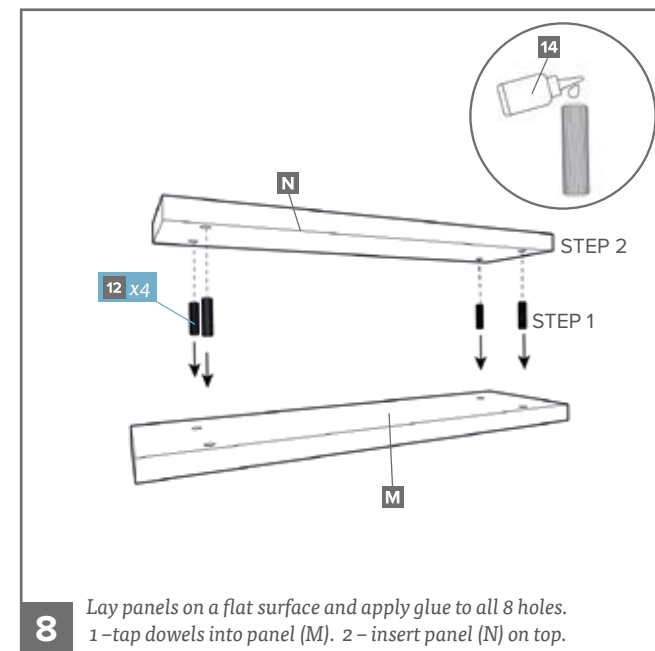
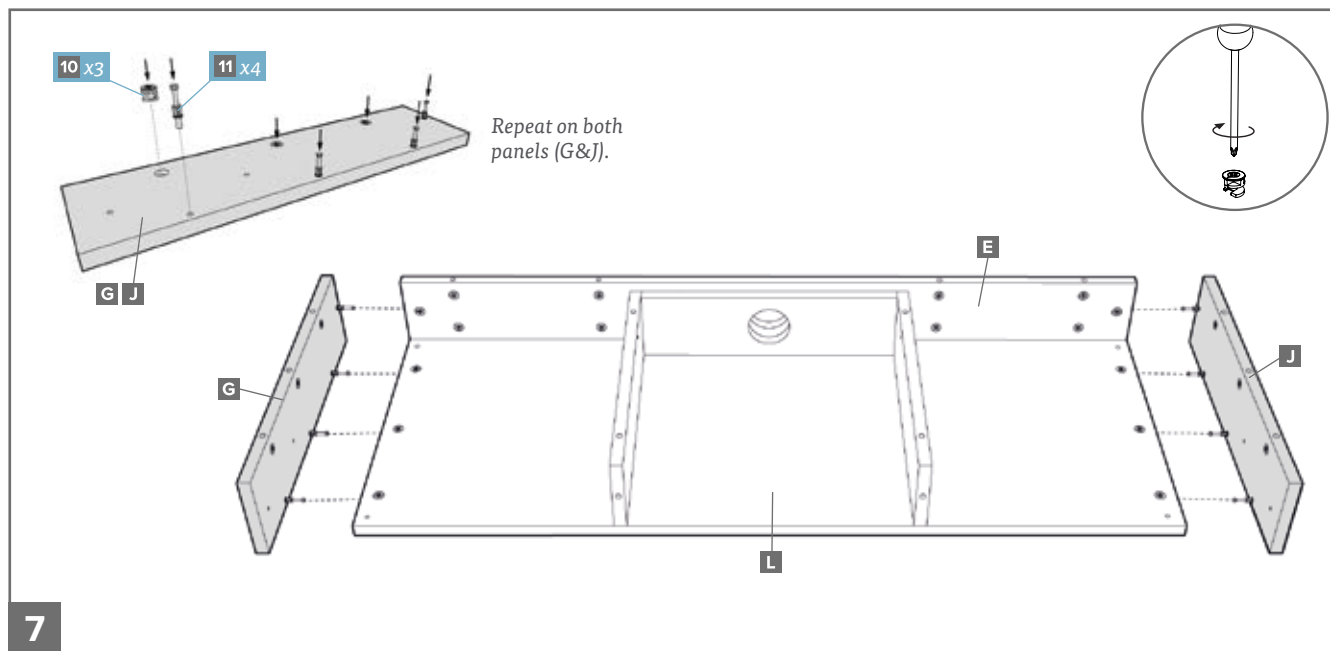
We recommend you use the Wall Mounting Brackets provided to fix the dressing table to a wall (where possible). This will prevent the unit being pulled over. Use suitable fixings.

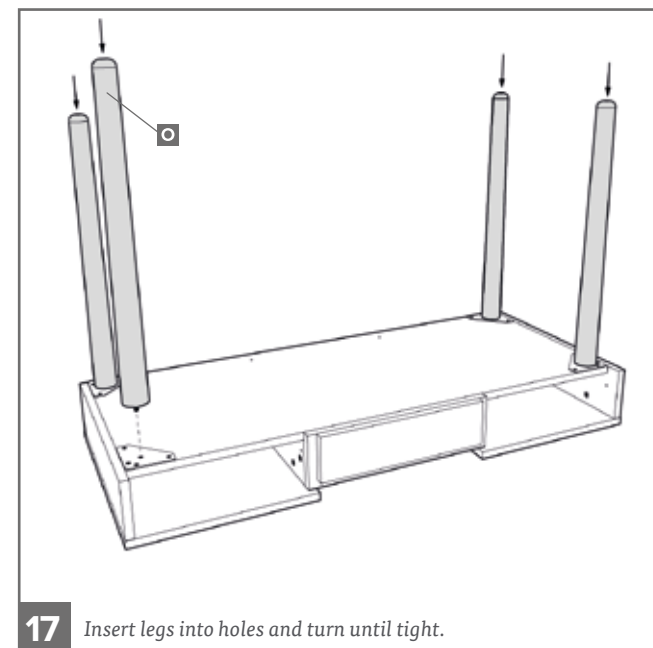
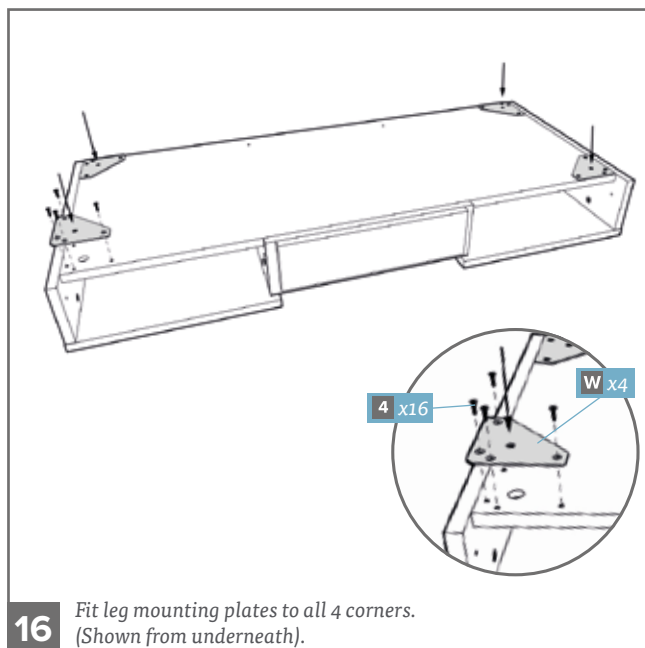
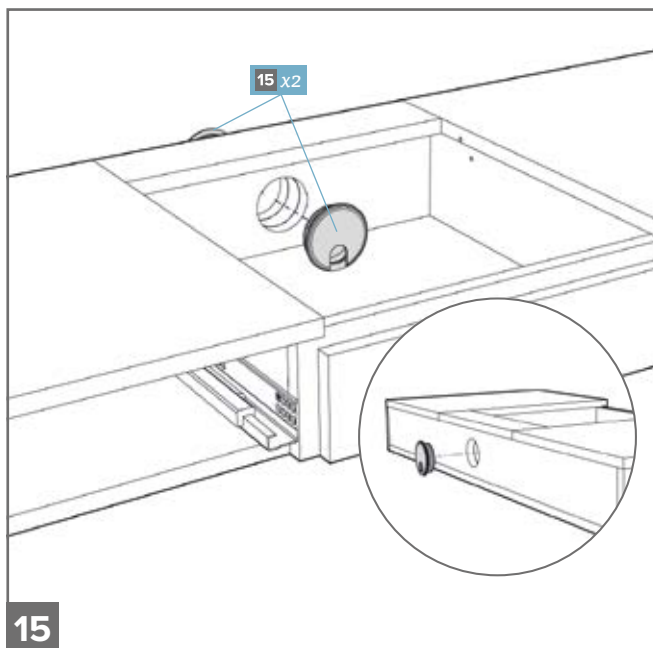
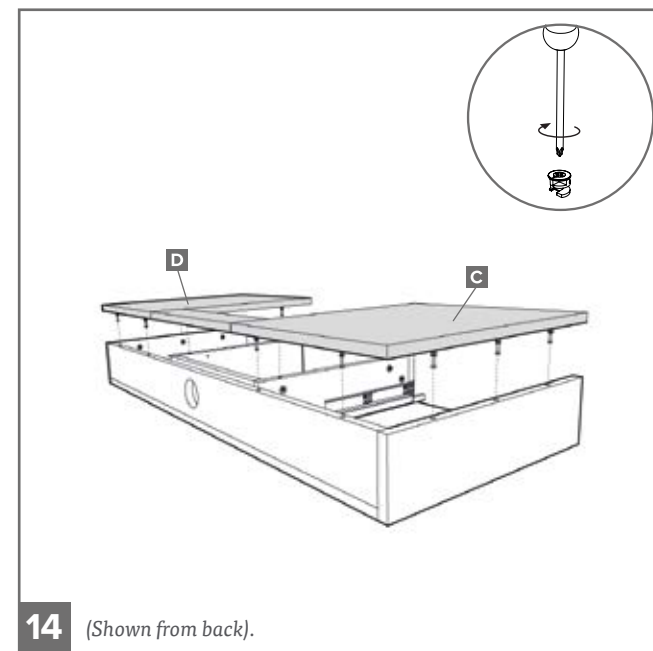
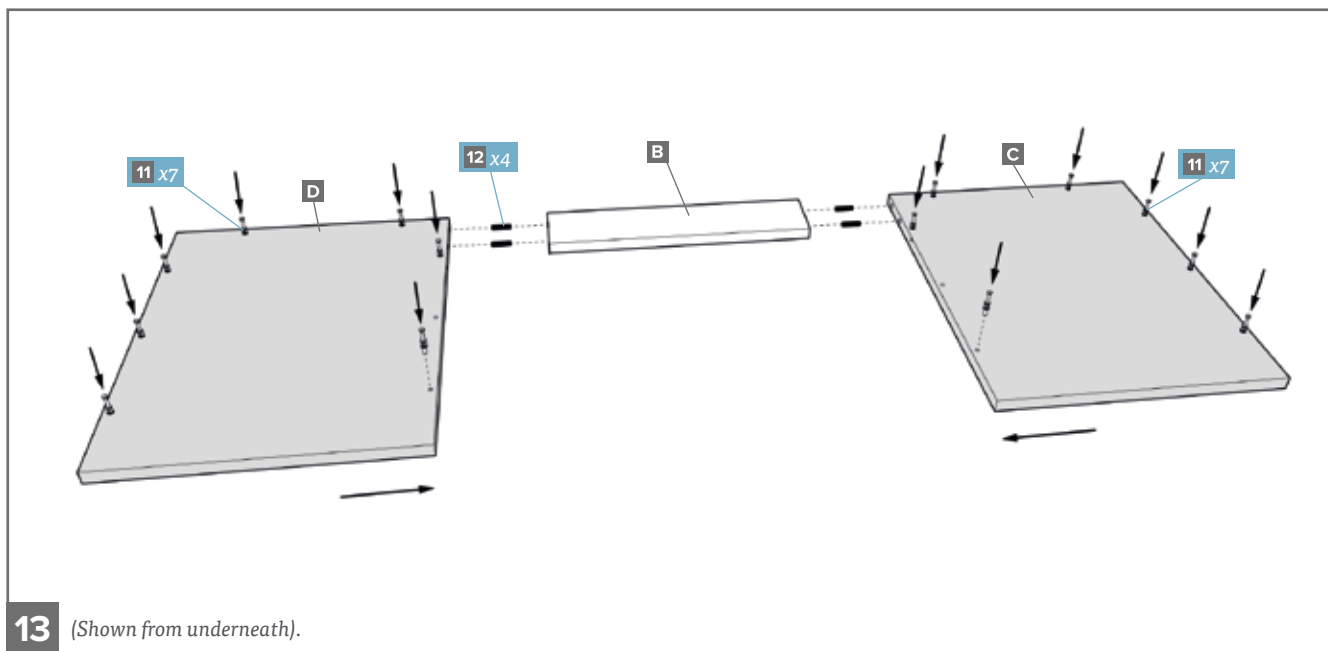


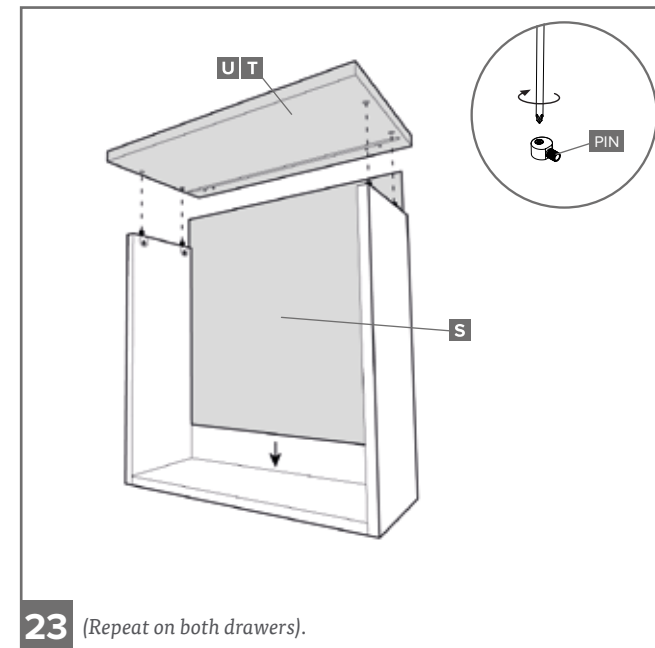
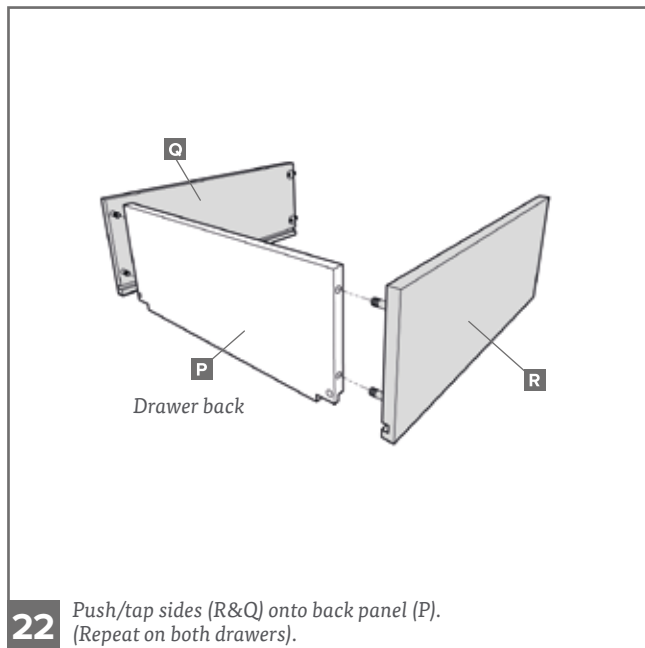
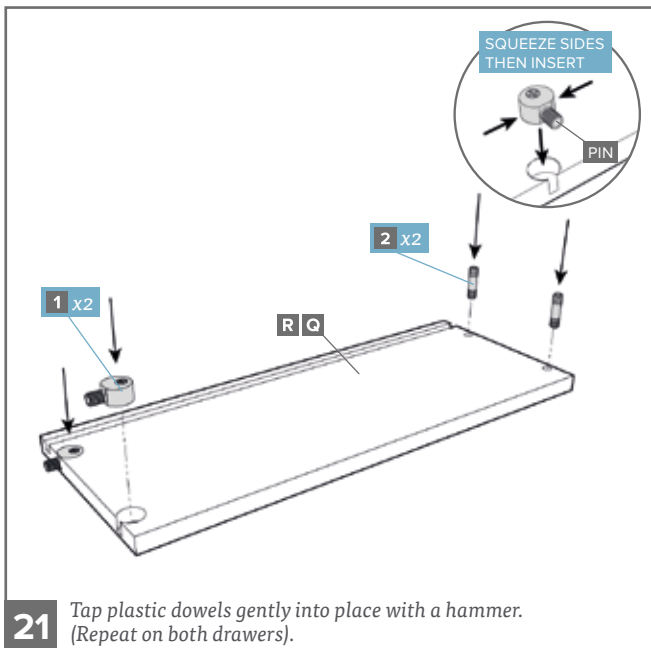
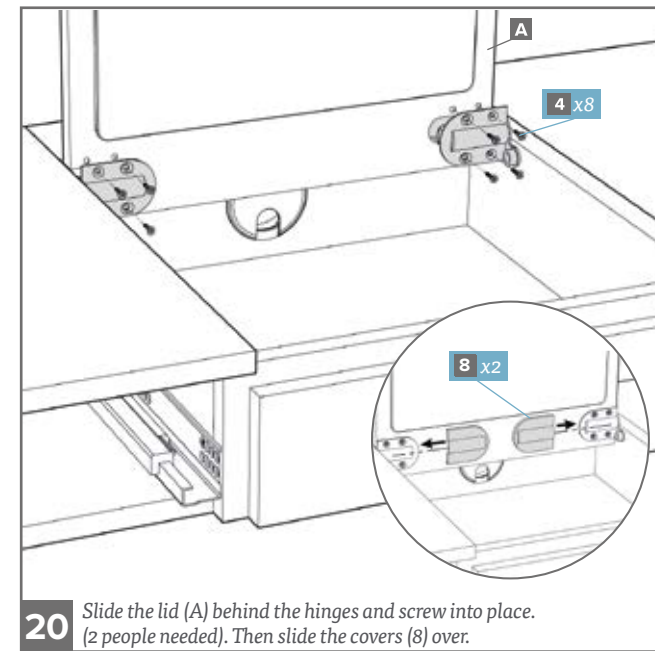
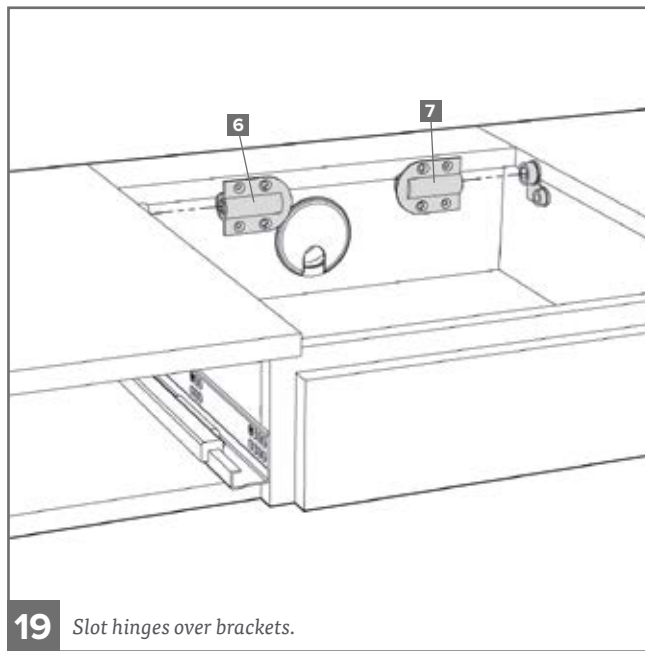
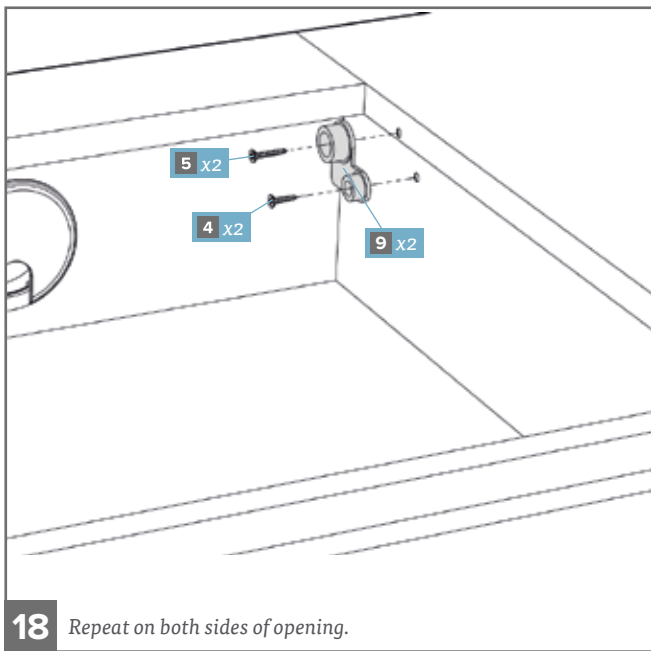
spaceslide®
we make room

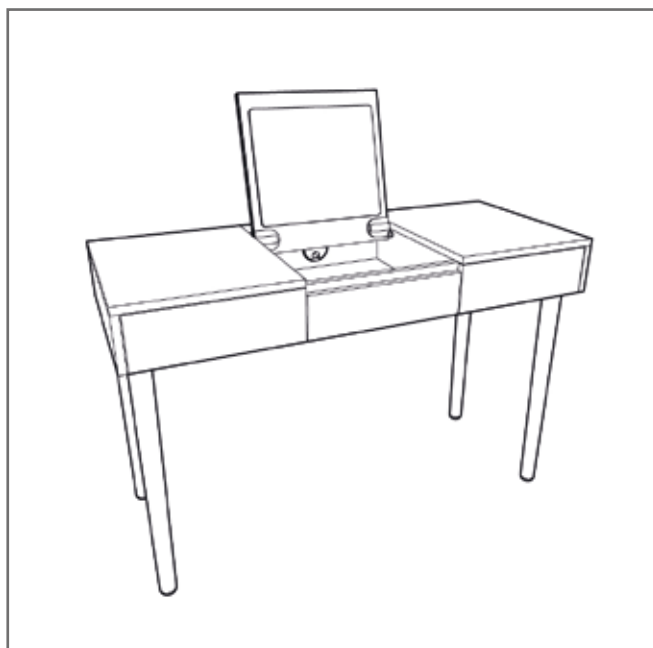
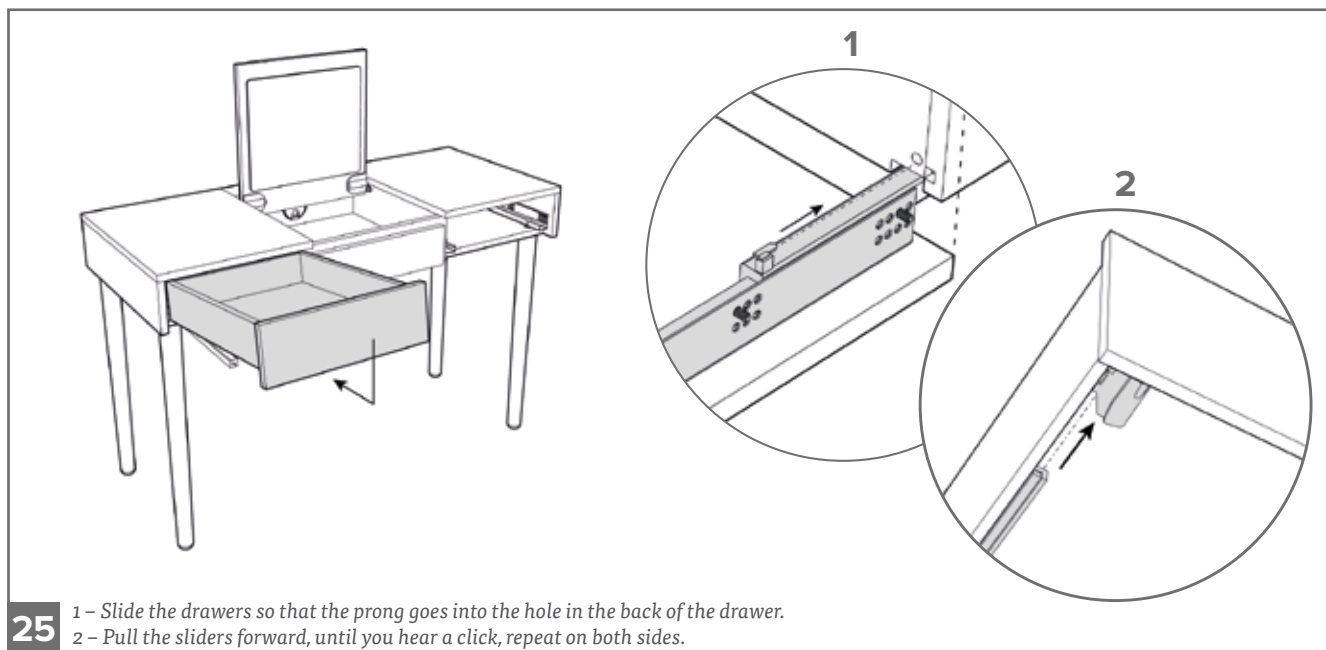
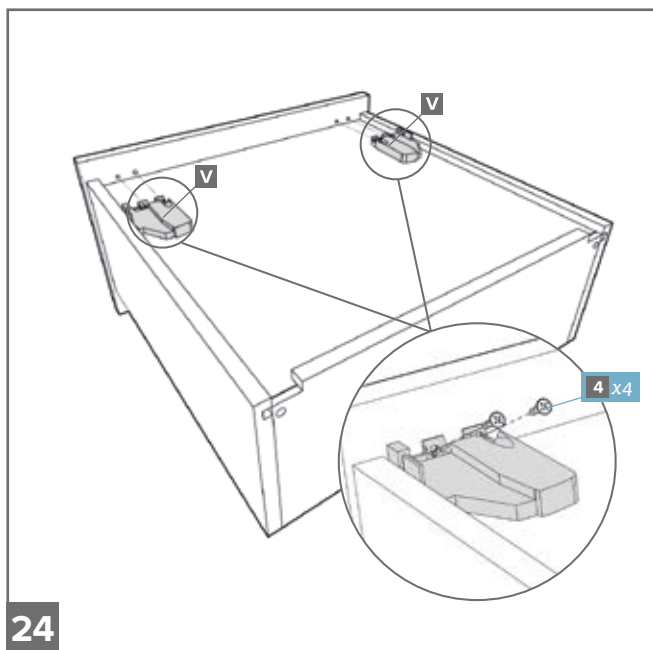
V2





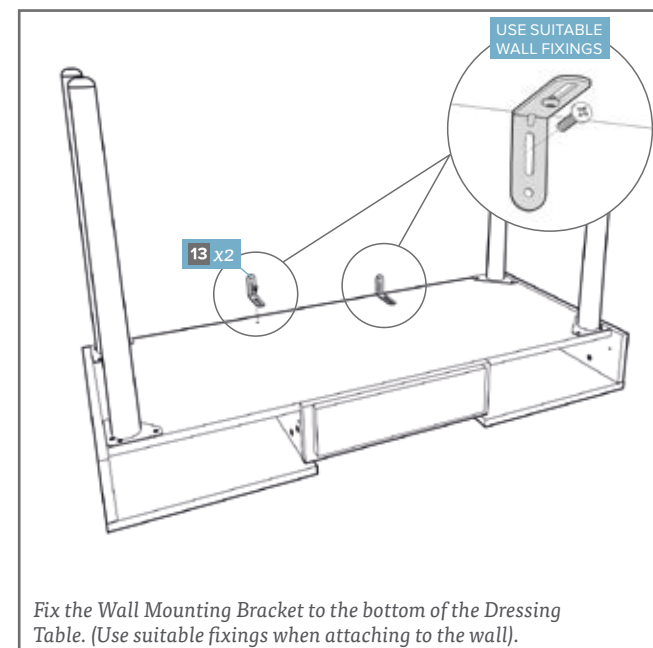






WALL MOUNTING BRACKETS

We recommend you use the Wall Mounting Brackets provided to fix the dressing table to a wall (where possible). This will prevent the unit being pulled over. Use suitable fixings.

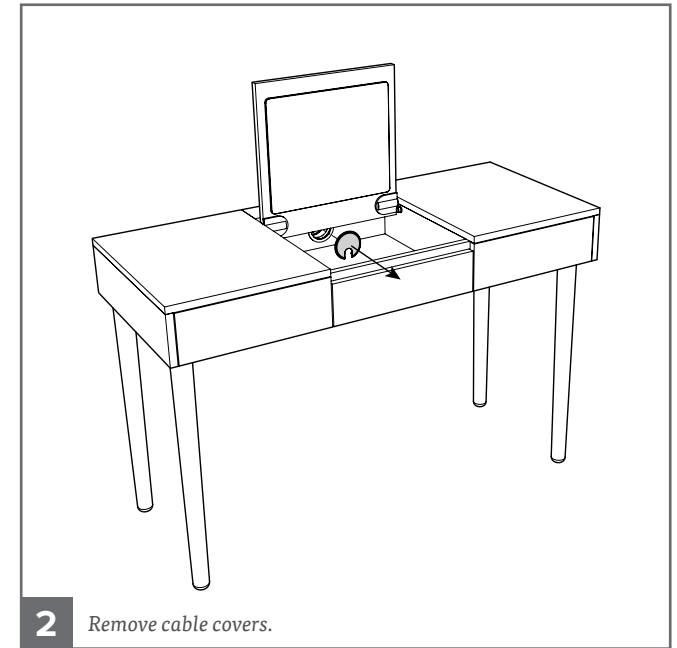
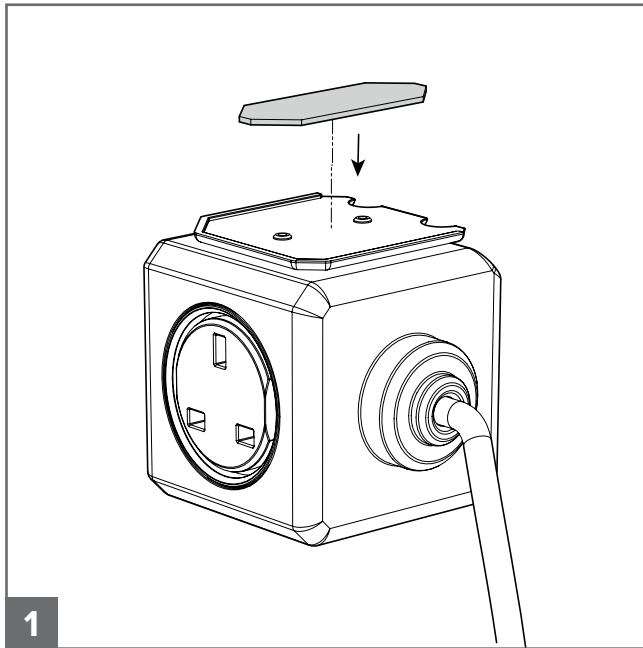


DRESSING TABLE POWER CUBE

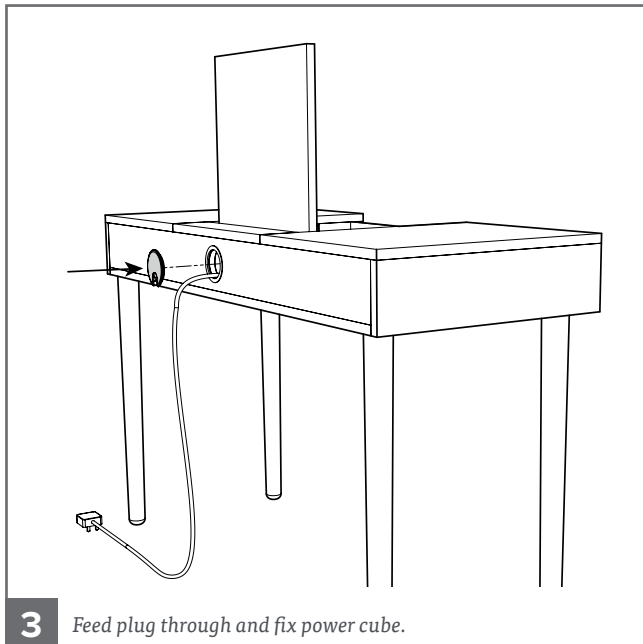
Assembly Instructions

spaceslide®
we make room

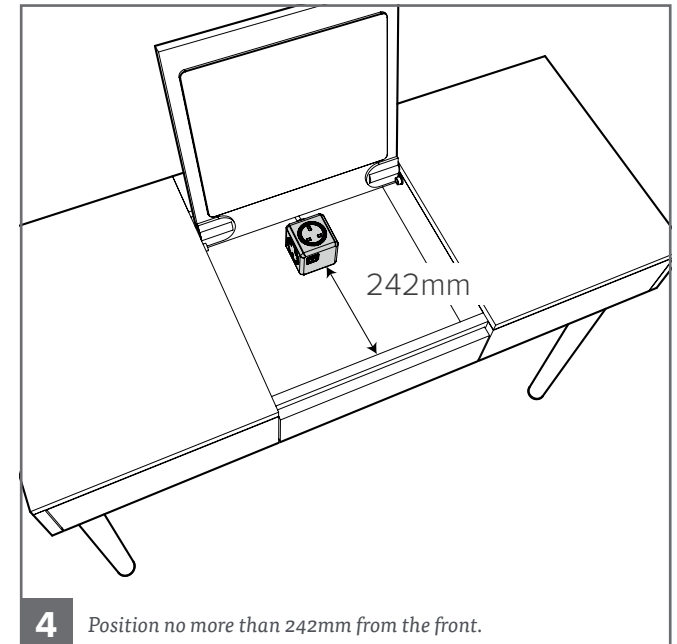
V1



2 Remove cable covers.



3 Feed plug through and fix power cube.



4 Position no more than 242mm from the front.