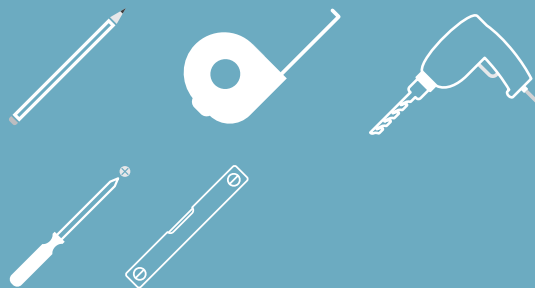


HOW TO FIT HINGED GLASS DOORS

Assembly Instructions

TOOLS REQUIRED:



! Please check your opening for any hidden electrical wires and water pipes before / screwing.



spaceslide®
we make room

V1

⚠ WARNING ⚠

When broken, toughened glass shatters into small, blunt-edged fragments which reduce the risk of personal injury. Caution should be used during assembly and installation to ensure that the glass is not impacted by metal objects which can cause this shattering to take place. If in any doubt, we recommend a professional glass installer should be used.

HEALTH & SAFETY

- The doors are a minimum 2 person lift
- Do not let the corners and edges of the glass come into contact with floors or walls
- Do not hit the corners of the glass especially when unprotected
- Use all required gaskets and washers
- Do not over tighten hinges and brackets onto the glass.



TWO PERSON
LIFT



FRAGILE
GLASS



STORE THIS
WAY UP



NO IMPACT
ON CORNERS

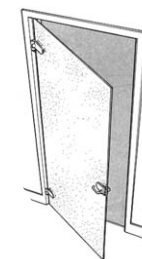
PARTS INCLUDED:

2 x Hinges with Allen Key & Fixings.

1 x Latch Set with Allen Key
(Please note: The latch is adjustable for use with a left hand or a right hand hinged door. Inward or outward opening. Check that the latch handing suits your needs before fitting it and adjust it if necessary - see Latch Handing Checking & adjustment).

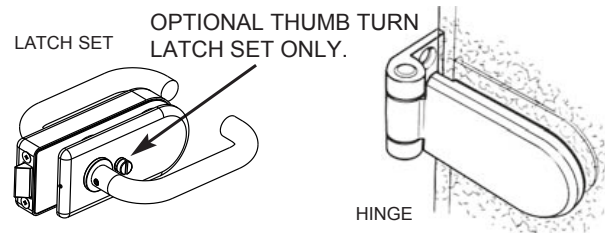
1 x Glass Door Panel.

1 x Set of Instructions.



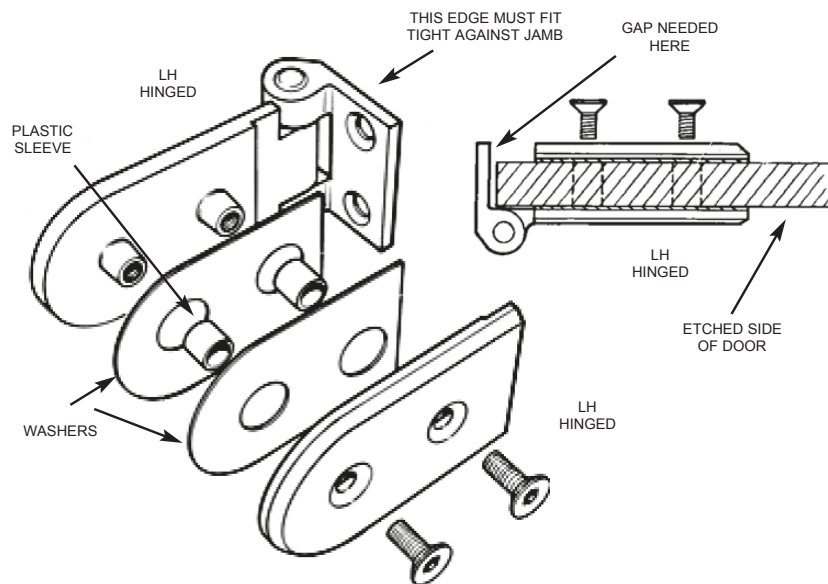
LH hinged
Door shown

NOTE: Instructions show thumb turn locking latch set, standard latch set installation is the same but without the thumb turn.



PREPARING THE DOOR TAKE CARE NOT TO SCRATCH ANY PARTS.

Take off all of the packaging and check the door size and its type (Etched or clear). When satisfied lay the glass panel onto a flat surface, (covered with suitable protection) to fit the hinges.



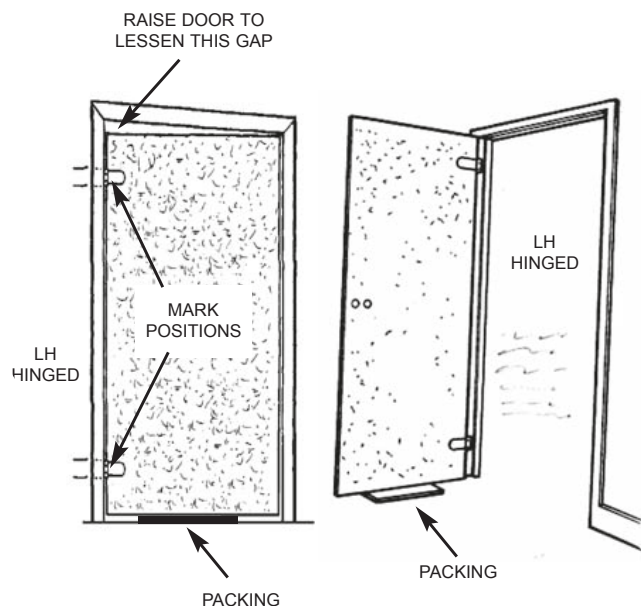
FIXING THE HINGES

PLEASE NOTE: *If your glass panel is etched, it is usual practice to face the etched side away from the door frame. Strip down the hinges by removing the screws with the Allen key provided.*

Position through the holes in the glass panel making sure that the washers and Plastic sleeves are fitted - see diagram then tighten the screws.

Make sure that there is a gap between the hinge and the edge of the glass panel when the hinge is in its closed position - see diagram.

Now fit the other hinge in the same way.



FITTING THE DOOR INTO THE FRAME

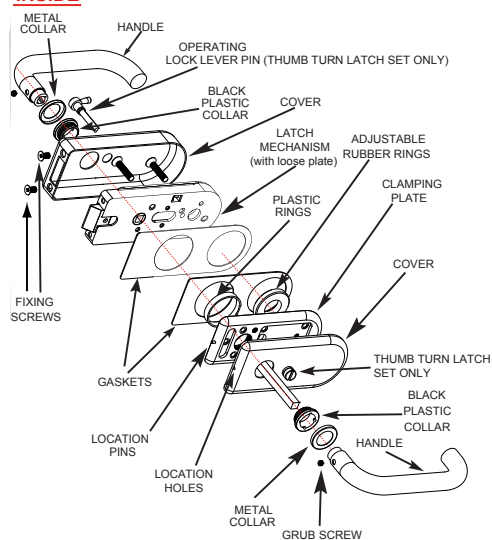
PLEASE NOTE: If replacing an existing door you will need to fill and paint the existing hinge recesses and screw holes with resin wood filler, as they are no longer required.

For the next stage, two people may be needed. You can choose to install the glass door with the hinges fixed on its left hand or right hand side (Viewed with door opening towards you). When deciding take care that it will not contact radiators or any sharp objects when opening, or cover a light switch when open.

Start by placing suitable packing under the door so that the gap between the door and the frame is the same around both sides and top when closed. If the frame is not square or its top is not level, you should raise the door as much as possible but ensure that the top edge of the glass panel does not catch the frame when closing - see diagram.

When satisfied with the door position mark the position of the top and bottom edge of the two hinges onto the frame - see diagram.

INSIDE

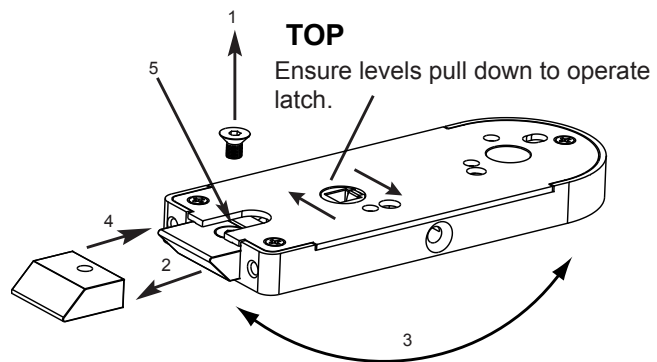


OUTSIDE

DISMANTLING THE LATCH

Unscrew the two black plastic collars and remove the covers.

Remove the threaded operating lever and opposite.



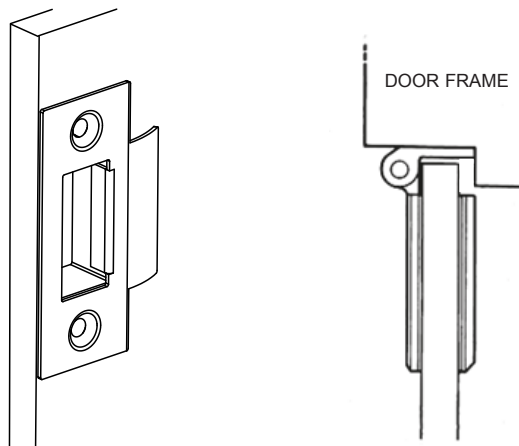
If opposite handling is required flip the latch mechanism length ways so that the opposite face of the lock is now in contact with the door and re-fit the latch as show.

BOTTOM

LATCH HANDING – CHECKING AND ADJUSTMENT

To check the current handing offer the latch mechanism upto the door and ensure the latch is operated by pulling down on the handle. Handing can be changed as follows:

1. Remove the latch bolt Screw with the Allen key provided.
2. Withdraw the Latch bolt from the Latch Mechanism and put it to one side.
3. Turn the Latch mechanism over length ways.
4. Re-fit the latch bolt with its flat side away from the door.
5. Re-fit the Latch bolt Screw and tighten it fully.
6. Re-fit the plate to the top of the latch mechanism with its countersunk holes uppermost.



FITTING THE STRIKER PLATE

Close the door and mark the striker plate position. Remove and chisel out the centre hole to the correct depth. Fit the plate, drill two pilot holes and fix with the two screws provided - see diagram . Check that the glass panel does not catch the striker plate or hinge when closing.